



2012-2013
ACADEMIC ACHIEVEMENT
SULLIVAN WEST CENTRAL SCHOOL

October 10, 2013 ~ 6:30 PM
Sullivan West High School Library

DEFINITIONS

- **New York State Proficiency** – advancement in knowledge or skill
- **Cohorts** – a group of individuals having a statistical factor (as age or class membership) in common in a demographic study <a *cohort* of high school students all entering 9th grade in the same school year
- **Growth** – progressive development
- **APM** - ELA/Math Aspirational Performance Measure (percentage of the cohort who graduated and earned 75 or greater on the ELA Regents and earned 80 or greater on a math Regents) as of June of the 4th year

CURRENT NYS REQUIREMENTS

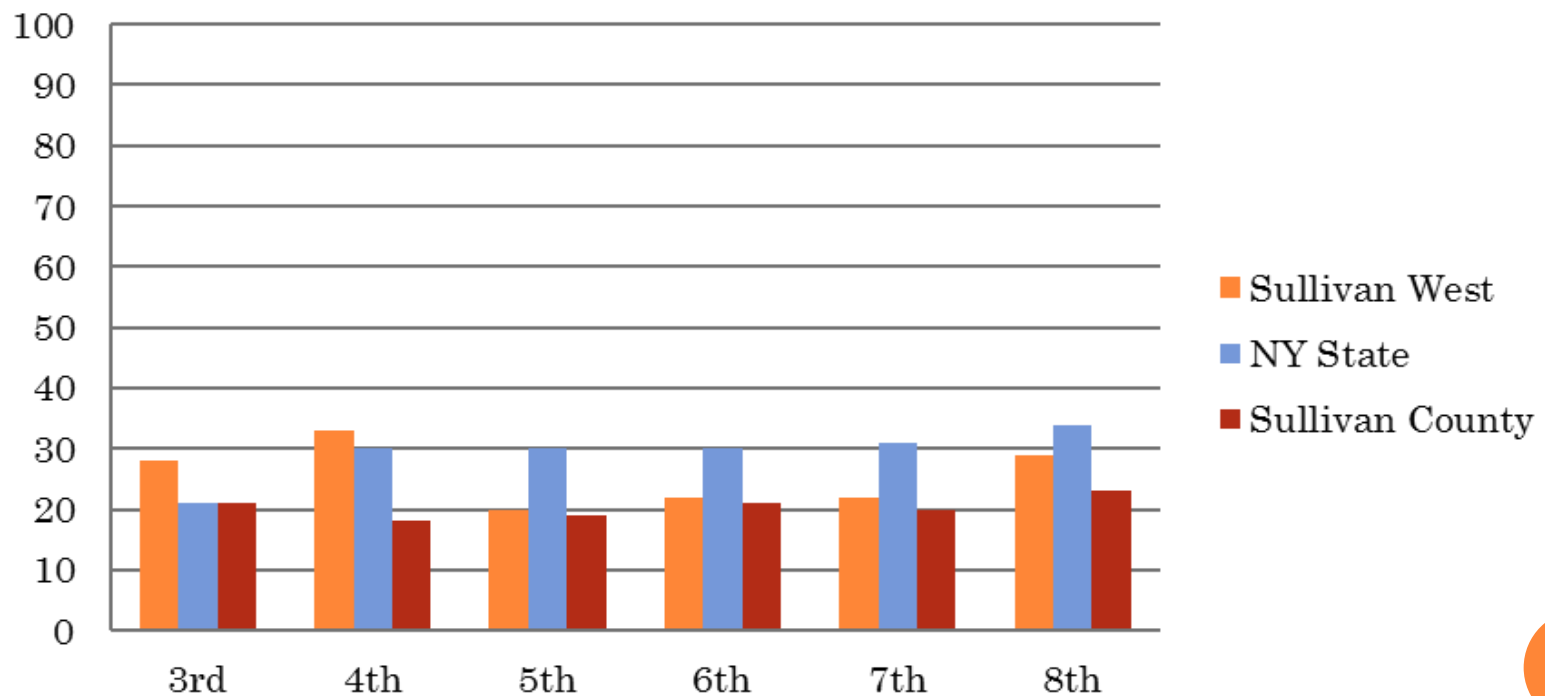
Content Area	Regents Diploma ¹	Regents Diploma w/Advanced Designation ¹
Mathematics	3	3
English	4	4
Science	3	3
Social Studies	4	4
Health	.5	.5
Arts	1	1
Languages Other Than English (LOTE) ³	1	3
Physical Education	2	2
Sequence Courses/Electives	3.5	1.5
Total Credits	22	22
Regents Exams - Score of 65 or above for general education students and 55 or above for SwD ²		

¹An Honors Designation is applicable for students earning an average of 90 on all required exams

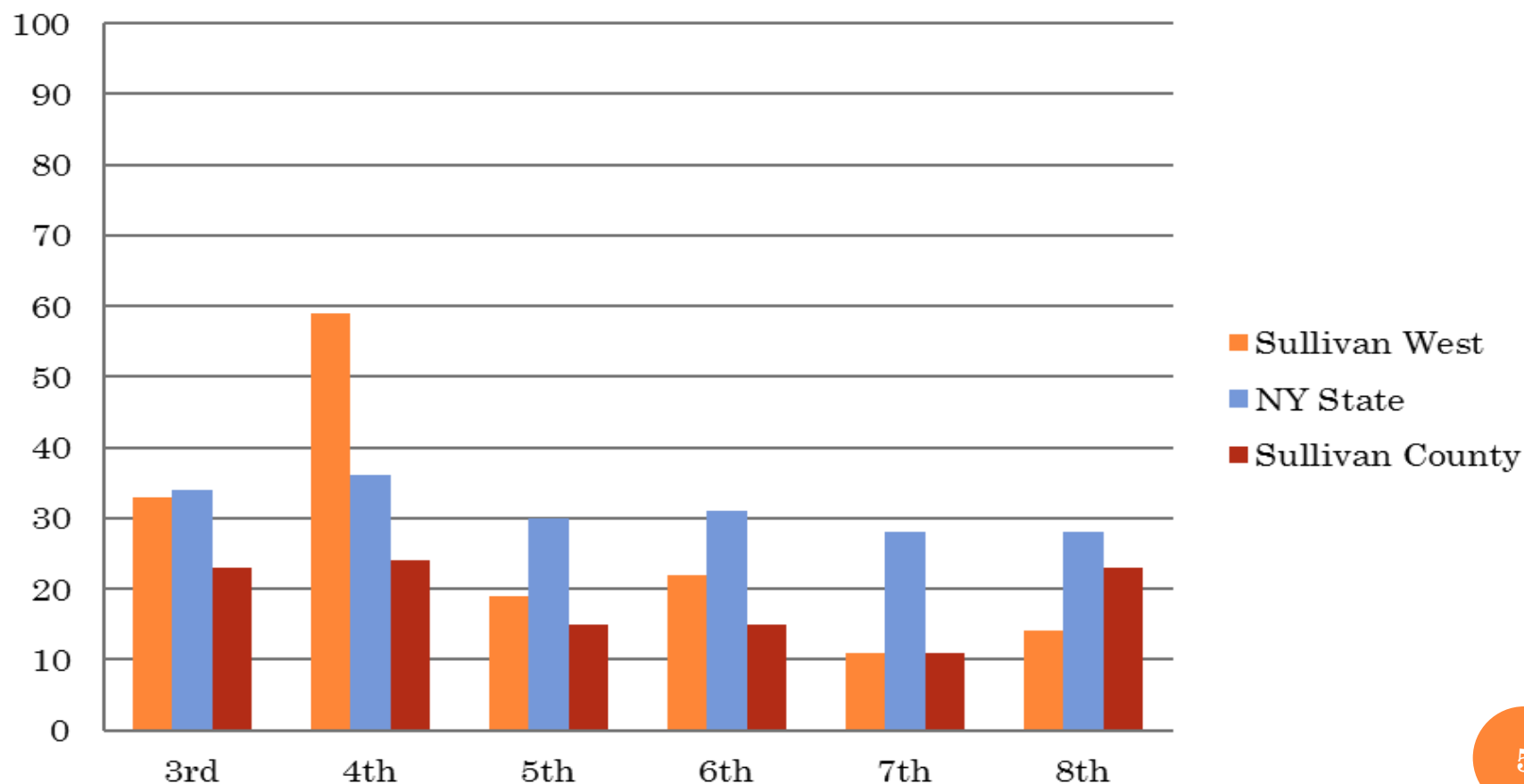
²The current safety net for students with disabilities. An additional compensatory option safety net is being considered.

³Must pass a countywide assessment at Commencement Level or obtain a 5 credit sequence in CTE.

2013 ELA Grade 3-8 % Proficient Sullivan West CSD, NYS and Sullivan County CSD's Comparisons



2013 Math Grade 3-8 % Proficient Sullivan West CSD, NYS and Sullivan County CSD's Comparisons



THIS 2012 TO 2013 COMPARISON CHART PROVIDES THE SCALE SCORES IN 2013 THAT ARE CONSIDERED TO MATCH (OR BE APPROXIMATELY EQUIVALENT ON A PERCENTILE BASIS) TO THE SCALE SCORES IN 2012, AND THE PERCENTILE RANK THAT CORRESPOND WITH THE SCALE SCORE IN 2013.

2012 to 2013 Comparison Chart--2012 Cut Scores and Matching 2013 Cut Scores
Grades 3-8 ELA

ELA	2012 Cut Score for Level 2	Matched 2013 Scale Score	2012 Cut Score for Level 3	Matched 2013 Scale Score	2012 Cut Score for Level 4	Matched 2013 Scale Score
Grade 3	644	264	664	299	695	350
Grade 4	638	253	671	296	723	355
Grade 5	648	257	668	297	700	357
Grade 6	644	256	662	297	695	367
Grade 7	642	252	665	301	699	362
Grade 8	629	248	659	302	708	372

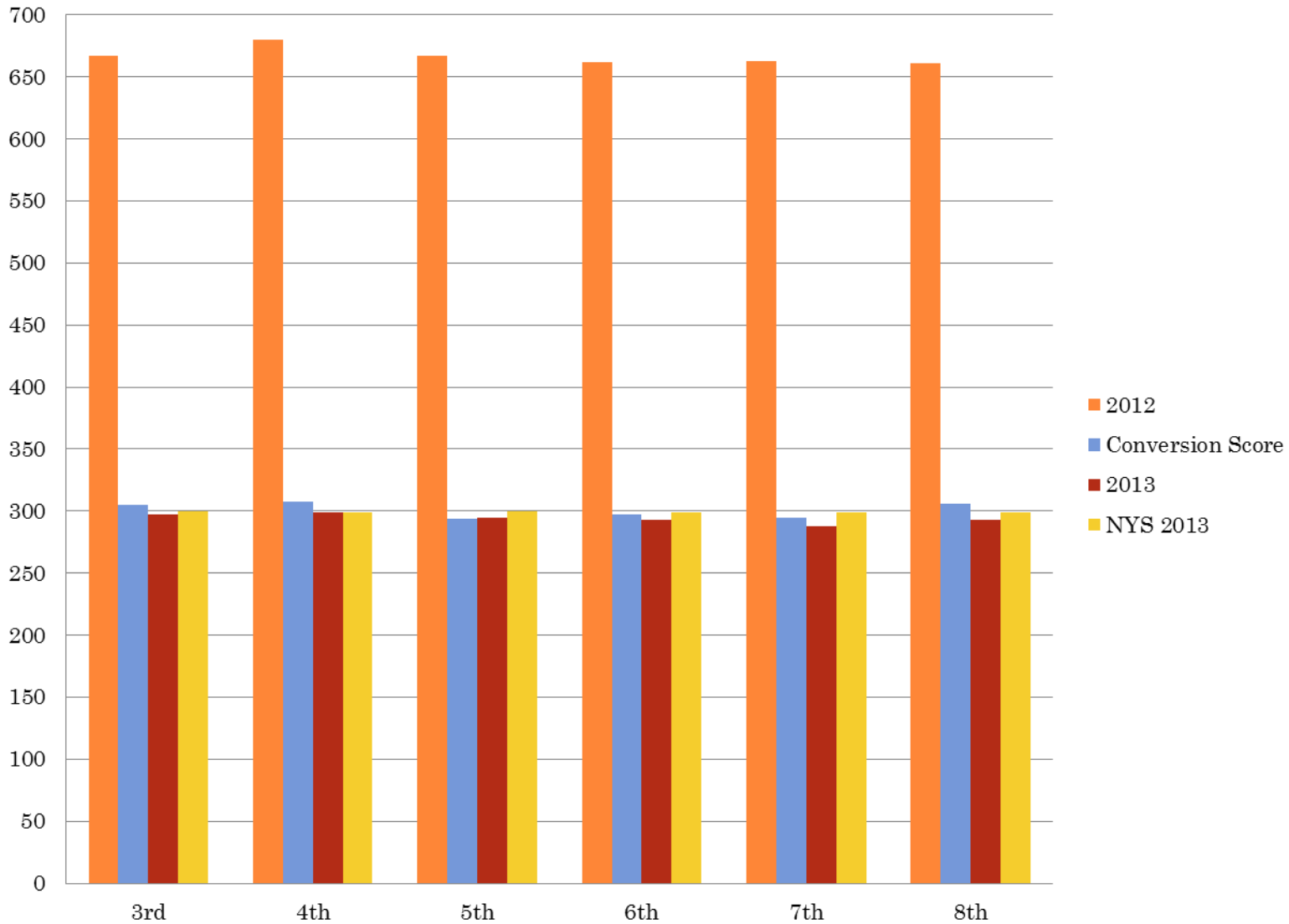
Note: Cut Score is defined as the minimum score required to be classified in a given performance level designation and is obtainable in the 2012 raw score to scale score conversion. Numbers under "Matched 2013 Scale Score" represent the scale score in 2013 that corresponds to the 2012 cut score, and is not the 2013 cut score.

2012 to 2013 Comparison Chart--2012 Cut Scores and Matching 2013 Cut Scores
Grades 3-8 Math

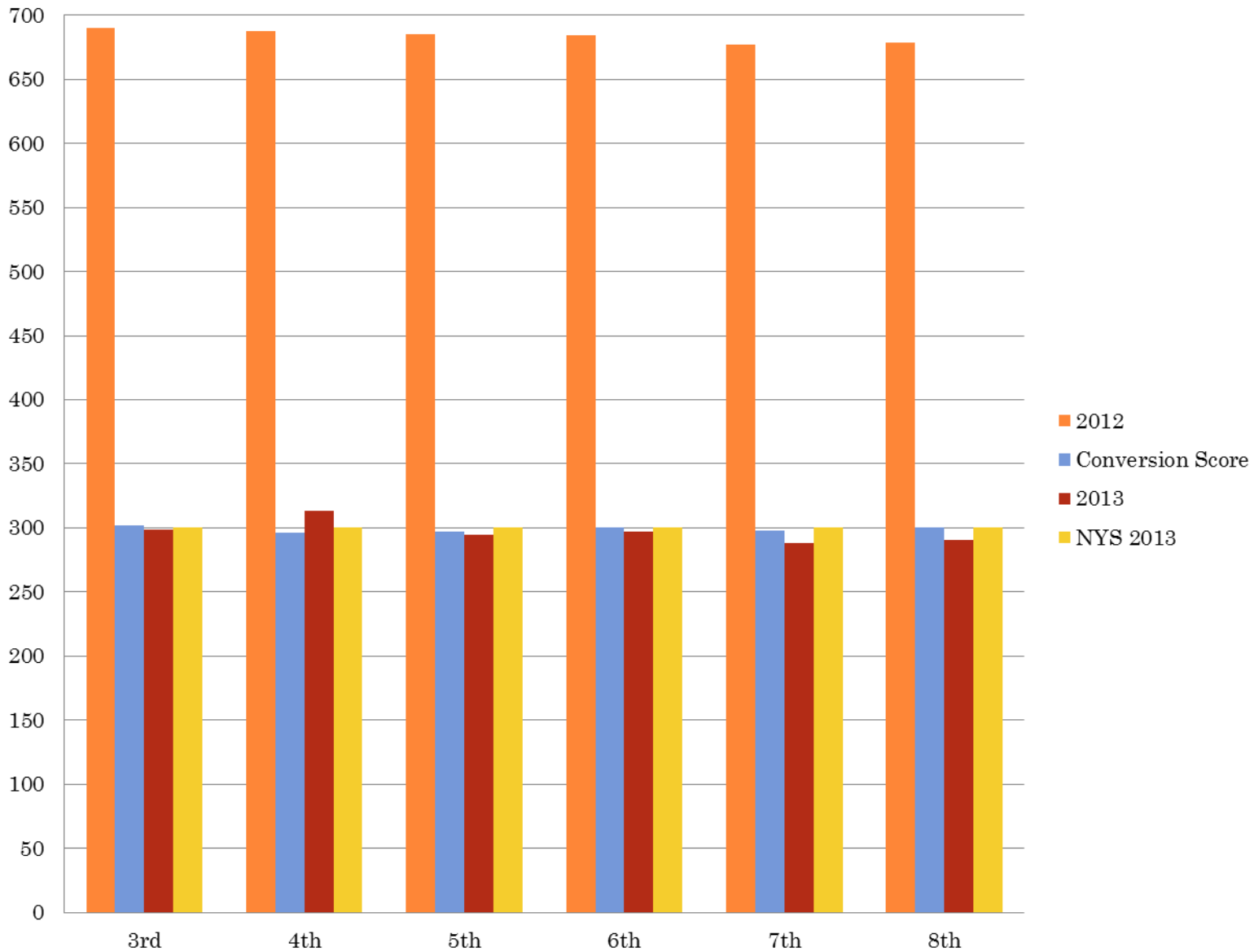
Math	2012 Cut Score for Level 2	Matched 2013 Scale Score	2012 Cut Score for Level 3	Matched 2013 Scale Score	2012 Cut Score for Level 4	Matched 2013 Scale Score
Grade 3	663	255	684	293	711	341
Grade 4	637	243	677	284	708	320
Grade 5	641	250	676	289	707	321
Grade 6	640	252	674	289	700	318
Grade 7	641	253	671	290	695	319
Grade 8	639	248	674	293	704	330

Note: Cut Score is defined as the minimum score required to be classified in a given performance level designation and is obtainable in the 2012 raw score to scale score conversion. Numbers under "Matched 2013 Scale Score" represent the scale score in 2013 that corresponds to the 2012 cut score, and is not the 2013 cut score.

2012-2013 ELA Mean Score



2012-2013 Math Mean Score

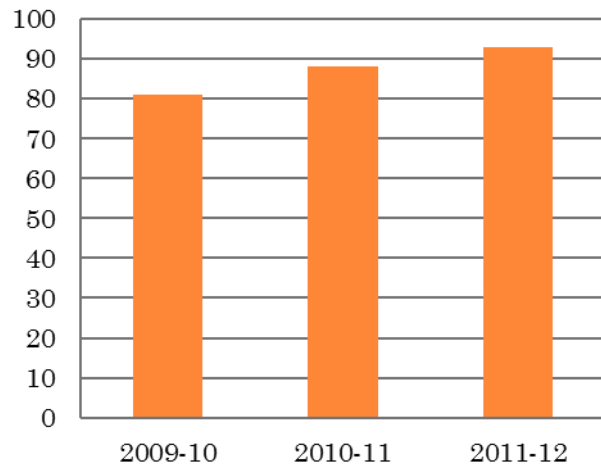


Sullivan West CSD 2010-2012

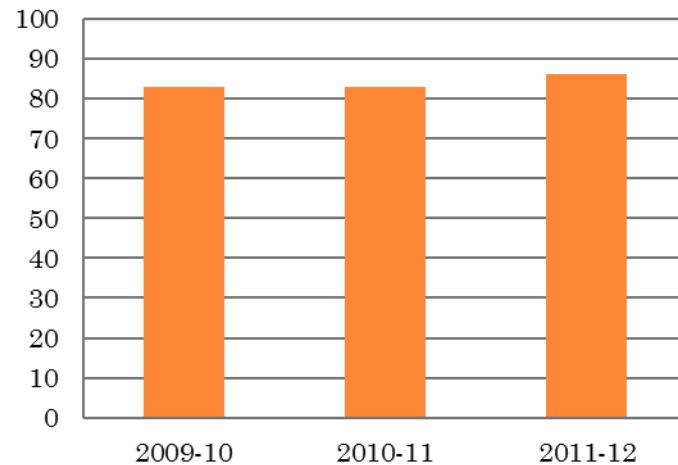
4th and 8th Grade

Science Trends

4th Grade



8th Grade

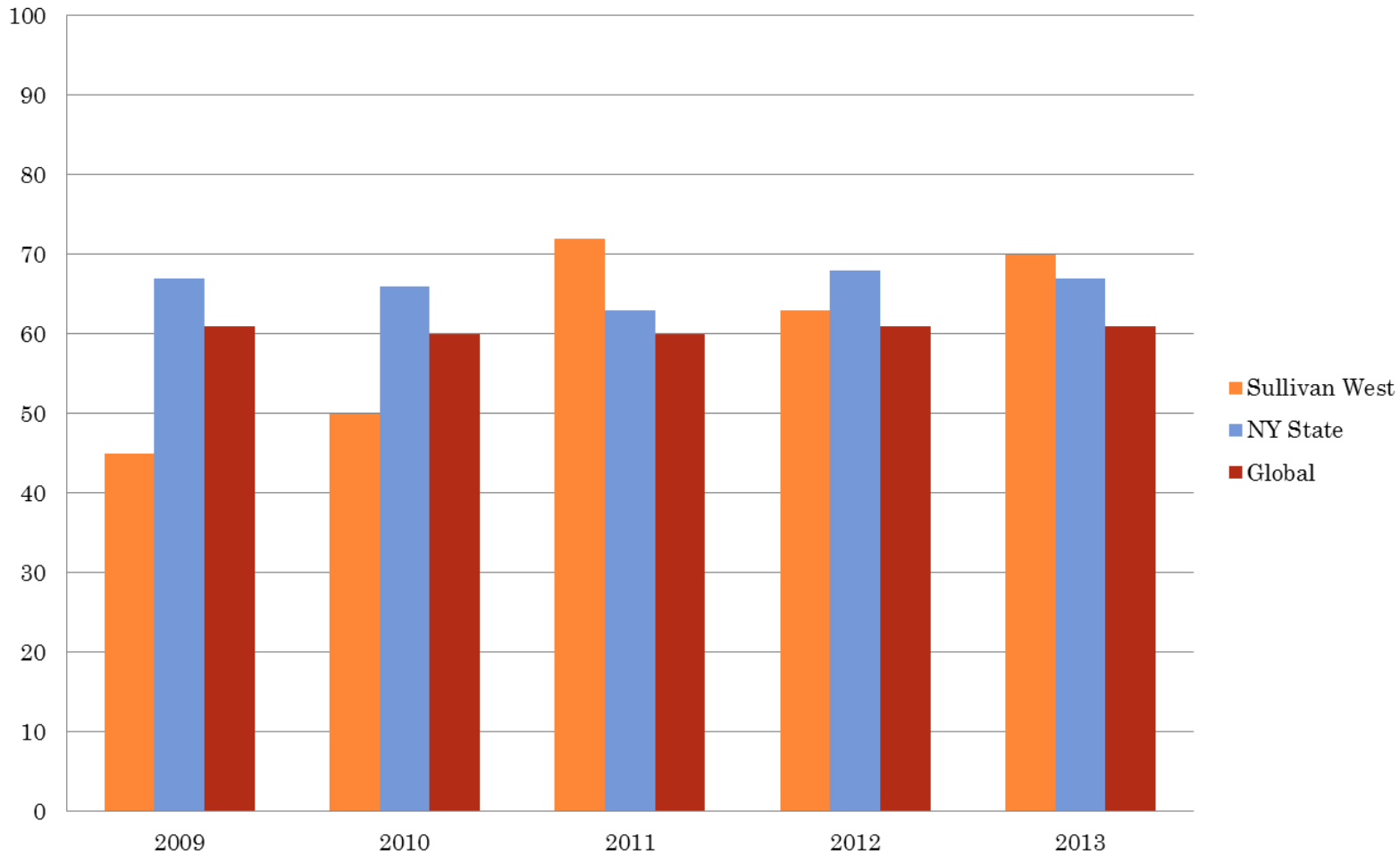


Science Scores are still embargoed for 2013

Potential Dual Credit/ College/ AP 2013-14

Subject Area	HS Course	Dual Credit	# of students
PTLW	Drawing for Design and Production	Introduction to Engineering Design (RIT)	28
	Technology Elective---DE	Digital Electronics (RIT)	22
Social Studies	U.S. History and Government	AP US History	15
	Global History and Government I	World History I	13
	Global History and Government II	AP World History	25
English	English 12	Speech/Composition (SCCC)	29
	English 12	AP Literature	15
	English 11	AP Language	7
Math	Pre-Calculus-- Math Elective	Sullivan County CC	27
	Intro to Calculus--Math Elective	Sullivan County CC	26
	Statistics-Math Elective	Sullivan County CC	32
Science	Physical Setting --Chemistry	Chemistry (Syracuse University Project Advance)	18
	Advanced Biology	AP Biology	15

AP 5-YEAR SCHOOL SCORE SUMMARY (2013)



5 YEAR TRENDS AVERAGE ACT SCORES

	<u>Total Tested</u>		<u>English</u>		<u>Mathematics</u>		<u>Reading</u>		<u>Science</u>		<u>Composite</u>	
	<i>District</i>	<i>State</i>	<i>District</i>	<i>State</i>	<i>District</i>	<i>State</i>	<i>District</i>	<i>State</i>	<i>District</i>	<i>State</i>	<i>District</i>	<i>State</i>
2009	18	47,520	23	23	25	23	24	23	24	23	24	23
2010	18	50,262	21	23	22	24	22	23	22	23	22	23
2011	22	52,255	23	23	24	24	24	24	24	23	24	23
2012	50	52,771	21	23	23	24	22	23	22	23	22	23
2013	39	53,287	20	23	22	24	21	24	22	23	21	23

Academic Achievement 2012-2013

SWCSD GRADUATED 94 STUDENTS IN 2013

83% WENT ON TO POST SECONDARY SCHOOLS

of Graduates Attending
2 Year Schools

43

of Graduates Attending
4 Year Schools

35

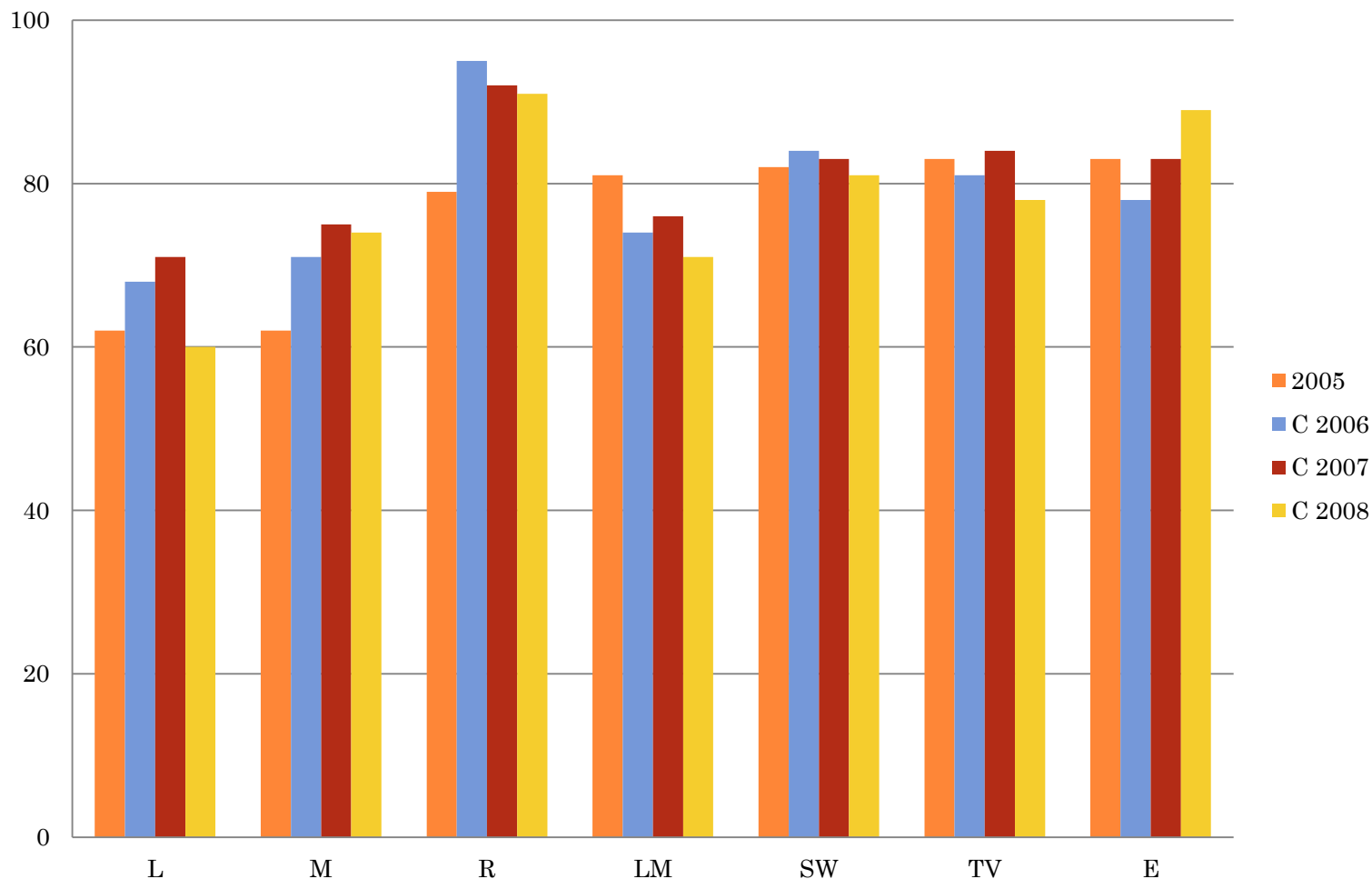
Graduate Breakdown

- 94 Main Campus
- 0 Alternative Education
- 0 BOCES
- 0 August Graduates



83 % of the students that graduated from the Main Campus went on to 2 and 4 year **Post Secondary Education**

2005-2008 Sullivan County Cohort Graduation Rate % Comparison



Data acquired from ...

- NYS School Report Card for each District, <http://www.p12.nysed.gov/irs/>,
<https://www.nystart.gov/nystart/u/index.do>
- College Board,
<http://professionals.collegeboard.com/testing/ap/scores/online-score-reporting>,
- Engage NY, www.engageny.org,
- New York State Education Department Annual Regents Report
- Data Contained in the Student Information Repository System
- Sullivan BOCES, www.scbores.org
- i-Ready, www.i-ready.com
- College Readiness Letter, www.act.org